



# ORGANIC MARKET NEWS



FEBRUARY 14 - FEBRUARY 20, 2025

## FEBRUARY ORGANIC BLUEBERRIES



February **Organic Blueberries** are rollin'! Summer in Chile means peak season **Organic Blueberries** available here in the U.S.

**GOOD NEWS!** **Organic Blueberries** continue to be promotable out of Chile. Quality has been very nice overall and eating well.

Driscoll's **Organic Blueberries** remain limited out of Peru, but quality has been very nice as well.



**GOOD NEWS!** **Organic Blackberries** will be promotable from Mexico in mid-February. Quality has been nice, and supplies are increasing with aggressive pricing.

**Organic Strawberries** remain steady out of Baja and Central Mexico. Pricing and supplies are stable, and quality has been very nice.

**ALERT!** **Organic Raspberries** continue to be limited in February. Quality has been excellent, but pricing will remain high. New harvests are expected to start soon, and pricing should come down in early March.



### OG TOMATOES

**GOOD NEWS!** In late February, Lady Moon Farms in Florida continues to increase the amount of **Organic Snacking Tomatoes** they harvest due to favorable weather conditions. Increased production leads to price discounts, creating a highly marketable opportunity for the entire lineup.

Create a display that highlights premium **Organic Tomato** products from Lady Moon Farms, such as **Organic Sungold Cherries**, **Medley Tomatoes**, **Cherry Tomatoes**, and **Grape Tomatoes**, to influence consumers and enhance product sales.

**GOOD NEWS!** Canada and Mexico greenhouses continue to produce large quantities of **Organic Cluster Tomatoes** in February, which contributes to improved costs and promotional opportunities.

**Organic Beefsteak Tomatoes** became widely available in February, and price reductions are expected to continue throughout the month.



### OG LETTUCE

**GOOD NEWS!** Lady Moon Farms **Organic Romaine Hearts** are still widely accessible, and promotional opportunities are encouraged.

Florida's **Organic Lettuce** production remains abundant in February. The price and dependability of Lady Moon Farms' **Organic Leaf** and **Romaine Lettuce** products should remain unaffected throughout the month.

Desert growing regions of the West Coast continue to provide regular supplies of **Organic Iceberg** and **Romaine Hearts**.



### OG LADY MOON PEPPERS

**Organic Mini-Mix Sweet Peppers** are in peak season from Lady Moon Farms in Florida, sold in high graphic pouch bags.

Also from Florida, Lady Moon Farms has good supplies of **Organic Shishito Peppers** in pouch bags. This variety is ideal for sautéing with garlic and olive oil until blistered, then served with salt & pepper as an appetizer.

**Organic Green Bell Peppers** and **Jalapeno Peppers** from Lady Moon Farms in Florida continue in season



### OG ASPARAGUS

**GOOD NEWS!** Organic Asparagus prices continue to drop and are expected to do so until mid-March, at which point the pricing is anticipated to level out.

Get ready to promote!



### OG BRUSSELS SPROUTS

**GOOD NEWS!** Throughout February, Organic Brussels Sprouts are heavily promotable due to substantial price reductions. Prices are competitive due to the strong Mexican supply. These competitive prices and outstanding quality make the perfect combination for a promotional opportunity.

Mesh bags continue to be available to consumers as a practical “grab and go” choice.



### OG GREEN BEANS

Organic Green Beans are now available in both 15lb and 25lb options. Florida is currently producing exceptional-quality Organic Green Beans, while we await the full return of Mexico’s production.



### OG GRAPES

Organic Grapes have consistent supply from Peru and South Africa. Prices will remain elevated through the remainder of the season, even though the general supply will be better than prior years.



### OG CITRUS

**GOOD NEWS!** Peak season California Organic Citrus offers a variety of options for late February, including Gold Nugget Mandarin, Tango Mandarin, Blood Oranges (Bulk/Bag), Cara Cara Oranges (Bulk/Bag), Pummelos, Minneola Tangelos (Bulk/Bag), and TDE Mandarins from Buck Brand.



### OG CELERY

**GOOD NEWS!** Conditions for the Organic Celery market are significantly improving as February advances, with more competitive pricing and increased availability. For the rest of the month, anticipate adjustments in pricing, consistent supply, and exceptional quality.



### OG AVOCADOS

**NOTE:** Organic Hass Avocado supplies have tightened again after the big game promotions. 48ct fruit is especially tight. Consider offering 60ct fruit as much as possible, as that is where the majority of the Avocados are arriving.

**ALERT!** Equal Exchange Fair Trade Organic Hass Avocados will remain limited for the duration of the 2025 Mexican season. 48ct and 60ct Organic Fair-Trade Fruit will be available in smaller amounts, along with an 8/4ct ReadyCycle Tray option.



### OG MANGOS

New crop Organic Aaulfo Honey Mangos are here! Crespo Organics has an unusual flush of large premium-size 12ct Organic Aaulfo Mangos to start the season, and we will be promoting it through the end of February with a great beginning-of-season low pricing.

Organic Mangos have experienced gaps in supply due to container delays at the port. The Organic Kent Mango variety from Peru has been delicious. Be sure to get some before the season ends.



### OG BUNCHED GREENS

Organic Collard Greens and Kale from Lady Moon Farms in Florida are in good supply.

**NOTE:** Organic Spinach is encountering minor supply disruptions in California, contributing to an upward trend in market prices. We continue to monitor the situation closely to manage availability.

**ALERT!** Organic Red and Rainbow Chard are facing persistent aphid-related challenges in California. We are making every effort to secure inventory and maintain stock levels. During this period, Organic Green Chard serves as an excellent alternative.



### OG EGGPLANT

Mexican **Organic Eggplant** production is holding strong, and Lady Moon Farms is coming in with heavy volume from Florida. Look for promotions in March.



### OG BADGER FLAME BEETS

**NEW!** **Organic Badger Flame Beets** remain in abundant supply, exhibiting outstanding quality. This distinctive variety has even been recognized in Bon Appétit magazine for its unique attributes.



### OG GRAPEFRUIT

**Organic Grapefruit** has excellent quality and sizing out of California. This is a great time to push!



### OG APPLES & PEARS

**GOOD NEWS!** Washington **Organic Cosmic Crisp** and **Envy Apples** are promotable varieties to get behind!

The **Organic Sugarbee Apple** promotion and display contest is going on now. This premium variety has won repeat consumers!

**Organic Fuji, Gala, Granny Smith, Honeycrisp,** and **Pink Lady Apples** are in tighter supplies with strong markets.

**Organic Bartlett Pears** from Argentina are due in mid-February.

**Organic Bosc Pears** out of Washington have finished for the season.

Israeli-produced **Organic Color Bell Peppers** are widely accessible and of exceptional quality. There is also still an alternative source from Mexico. Availability from Mexico has been affected by border issues, but these should be temporary.

**ALERT!** **Organic Mini Watermelons** will be unavailable as crops transition. Expect a gap until mid-March.

**ALERT!** **Organic Delicata** continues to experience sporadic availability. There will be limited product the rest of winter until we get into the next growing region in Mexico.



### OG ROMANESCO

**Organic Romanesco** is in season from Southern California for February. Now is the time to highlight this interesting specialty veg item which can be used similar to Cauliflower.



### OG BROCCOLI & CAULIFLOWER

**GOOD NEWS!** Early in February, **Organic Broccoli** and **Cauliflower** have seen positive market conditions. The desert regions of Yuma, AZ and El Centro, CA are yielding considerable amounts, which is increasing the overall quantity of product available and reducing prices.

To increase sales, combine the two products and make visually appealing displays.

### OTHER STORIES

**Organic Red Potatoes** continue to be in good shape with nice sizing, steady pricing, and good quality coming out of Washington state.

**Organic Russet Potatoes** hitting mid-February will be from Idaho in both bulk packs and 5 lb and 3 lb bags. The first of this product arrived in mid-February with a bit more than usual silver scurf, however quality will improve on subsequent shipments.

**Organic Royal Star Papayas** are in good supply for February from Mexico. The quality has been good.

**ALERT!** **Organic Pineapple** supplies continue to be limited. Expect some prorates through February. Prices are high.

# CONVENTIONAL MARKET NEWS

FEBRUARY 14 - FEBRUARY 20, 2025

## PROMOTABLE BROCCOLI & CAULIFLOWER



Late February is the time to promote **Broccoli** and **Broccoli Crowns**.

**GOOD NEWS!** Throughout February, **Broccoli** availability has remained consistent. Production in Mexico and Florida helped maintain a balance of supply and demand even as California saw cool temperatures. The quality continues to be excellent, and prices remain competitive to encourage more business.

February's **Cauliflower** market has seen stability, with consistent demand and relatively small price fluctuations. California's cooler temperatures early in the month had a minor effect on yields, causing modest price increases. However, quality has held steady with uniform color and sizing to finish the month.



### CV DRISCOLL'S SWEETEST BATCH

**Driscoll's Sweetest Batch Strawberries** are in season from Florida with deep flavor.

**Driscoll's Sweetest Batch Blackberries** are available in steady supplies, and the quality of this premium fruit has been outstanding.

**Driscoll's Sweetest Batch Blueberries** are starting to slow down as the Peruvian crop finishes. Expect pricing to increase as this premium pack switches to Mexico.



### CV APPLES

The **SugarBee Apple** promo and display contest is currently underway. The premium variety is beautiful and delicious. Be sure to build a large display and enter the contest for your chance to win one of many prizes, including a grand prize trip to Washington to see the **SugarBee Apple** process, from orchard to packaging and all the R&D behind the scenes.

**ALERT!** Eastern and Western **Honeycrisp Apples** remain the tightest apple variety, with very strong and rising prices.

**GOOD NEWS!** **Hunnyz Apples** are now in stock. This cross between Honeycrisp and Cosmic Crisp is crunchy, sweet, and delicious. It's a great high-color alternative to Honeycrisp, offering better value.

**GOOD NEWS!** Washington **Cosmic Crisp** and **Envy Apples** continue to be the **Apples** to promote, with excellent supplies, great quality, and great pricing!



### CV BERRIES

**GOOD NEWS!** **Blackberries** will be promotable from Mexico. Quality has been excellent, pricing is aggressive, and supplies are plentiful.

**Blueberries** continue to have split markets. Chilean fruit remains available with steady pricing and good quality. Peruvian fruit also remains available with lower volume. New crop Mexico fruit remains available at a premium, as quality and flavor are best.

**ALERT!** **Strawberry** supplies from Florida are short leading up to and coming out of Valentine's Day. Harvests are still well below projections, and the weather outlook next month shows rain and cooler temperatures, which will slow harvests further.

**GOOD NEWS OUTLOOK:** However, crops are expected to rebound to much more promotable supplies on **Strawberries** in early March, especially from Florida.

**ALERT!** **Raspberry** supplies remain limited with high pricing. Harvests continue to be light out of Mexico. **OUTLOOK:** New harvests are expected to begin in late February or early March, and pricing should ease as new fruit comes in. Quality remains excellent.



### CV GRAPES

**GOOD NEWS!** Grapes are promotable, with pricing across all sizes remaining favorable due to an oversupply of Chilean fruit arriving daily.

Lower retail prices and promotions are encouraged throughout February and March. Grapes can be a volume driver category for your store!



### CV AVOCADOS

**NOTE:** Supplies on Hass Avocados have struggled post-Super Bowl. Border delays and slower fruit crossings have also played a role in slightly higher prices this month. Large fruit, particularly 48ct and larger, will remain tight.



### CV DRAGON FRUIT

**GOOD NEWS!** White flesh Dragon Fruit will be in great supply along with Yellow Pitahaya. Pricing remains promotable for the middle of February!



### CV CELERY

**GOOD NEWS!** The Celery market has held steady in February, with strong quality, excellent color, and sizing. Early in the month, pricing saw improvement. With steady weather conditions, pricing and supply should remain reliable. Promotions in late February are encouraged.



### CV BRUSSELS SPROUTS

Brussels Sprouts have remained steady in February, with availability meeting consumer demand. Quality is good with adequate sizing, and costs continue to decrease. More production from Mexico and better growing conditions are contributing to stable pricing and supply.



### CV MANGOS

Peruvian Mangos have tightened this month due to port delays. The Kent Mangos have been excellent, arriving firm to firm-ripe.

Mexico has started with Ataulfo/Honey Mangos, and the Tommy Atkins Mango variety is expected to start harvesting right behind them. February and into March will see more limited availability for Tommy Atkins, but overall, the Mexican Mango season is expected to be a good one.



### CV POMEGRANATES

POM Wonderful POM POM Arils transition to imported Arils in the Sun Belle brand around mid-to-late February.

Imported Pomegranates are steady from Israel, and quality has been good. Four Seasons is offering a 6ct single-layer option for the imported fruit.



### CV GREEN BEANS

Green Beans have returned to stock, with both supply and quality remaining strong. Pricing is currently on a downward trend.



### CV ARTICHOQUES

Jumbo Artichokes remain readily available and priced competitively in February from Coachella, CA. Promote!



### CV PEARS

Our first new crop Argentinean **Bartlett Pears** have arrived, and the quality is excellent. With the domestic fruit almost finished and a much more advantageous market, it may be time to switch.



### CV LETTUCE

February has seen stable conditions for **Lettuce**, with a constant supply volume for every variety. Minor price fluctuations were due to colder weather, but overall availability and cost have remained stable.

**Iceberg** and **Romaine Hearts** have outstanding supply volumes, making them ideal for promotions.



### CV PEPPERS

1.5lb **Elongated Sweet Red Peppers** continue in season at reasonable prices out of field production in Mexico.

In February, there is a significant supply of **Color Bell Peppers**, primarily from Mexico. Quality has remained excellent with vivid color and decent sizing. Promotional opportunities to build displays and increase sales will be available in late February.

**Green Bell Peppers** are experiencing increased demand. There still may be occasional spot buys.



### CV TOMATOES

#### GOOD NEWS!

With steady supply volumes and competitive prices from Mexico and Florida, the market for **Roma** and **Round Tomatoes** has remained stable in February. Quality is favorable, with excellent color and firmness. Promotions are encouraged, and prices are expected to stay aggressive.

The market conditions for **Cluster** and **Beefsteak Tomatoes** have improved. Quality is good, with excellent firmness and color. Promotions are encouraged, and pricing continues to improve.



### CV CITRUS

Red-flesh **Mandarins**? Yes! **Mandarosa Red Mandarins** are now in season from California in 1.5/2 lb bags.

**GOOD NEWS!** **Mandarins** have excellent quality in both California and imported varieties.

**Specialty Citrus** has a variety of offerings, including **Sumo Citrus**, **Minneola Tangelos** (Bulk/Bag), **Stem and Leaf Mandarins** (Bulk/Clamshell), **Blood Oranges** (Bulk/Bag), **Cara Cara Oranges** (Bulk/Bag), **Heirloom Navel Oranges** (Bulk/Bag), **Pummelos**, **Meyer Lemons**, **Seedless Lemons**, and **Key Limes!**

The Texas **Grapefruit** crop will continue through mid-March. Expect markets to increase toward the end of February.

### OTHER STORIES

**Pineapple** supplies are limited in mid-February. Pricing is high, and 7ct and larger sizes are commanding a premium price.

Del Monte's **PinkGlow Pineapple** variety will be available for specialty promotion in mid-February.

**NOTE:** The supply of **Rainbow Chard** remains constrained, though we expect this to resolve by late February. Availability will improve as quality stabilizes.



### CV STONE FRUIT

**GOOD NEWS!** Excellent supplies of Chilean import **Nectarines**, **White Nectarines**, **Black Plums**, **Red Plums**, and **Lemon Plums** are now available to create a beautiful import stone fruit display.

**NOTE:** **Cherry** supplies are dwindling, and markets are rising. The cherry season could wrap up around early March, with a gap until California cherries start around May 1st.

Both **Euro** and **Mini Seedless Cucumbers** have been consistently available in February.

These reliable supplies have come from production in Canada and Mexico. For late February, prices should remain steady, though **Euro Cucumbers** may see slight increases.

The **Asparagus** market continues to decline, with prices trending downward. We are maintaining a limited inventory of 28 lb cases while we monitor market conditions and await price stabilization.

# POTATO LOVERS MONTH DISPLAY CONTEST

FEBRUARY 3 - MARCH 2, 2025



## FEBRUARY IS POTATO LOVERS MONTH!

Four Seasons Produce has partnered with the Idaho Potato Commission to bring you a display contest and promotion sure to put some muscle into the Potato category. We have some super attractive pricing, great Point of Sale kits, and exceptional quality Potatoes. Let's get creative, keep it fun, and keep it fresh!

The Idaho Potato Commission conducts their own National contest each year for Potato Lovers Month. For more information on the IPC National Contest, please visit <https://idahopotato.com/retail/2025-plm-display-contest>  
You may include your entry into both contests!

### DISPLAY CONTEST CRITERIA:

- Build an awesome display of Idaho Potatoes in your produce department. All product **MUST** be purchased from **Four Seasons Produce**.
- All displays **MUST** utilize the **Idaho Potato Point of Sale material**. Point of Sale kits are available through your Four Seasons Sales Rep or Merchandiser.
- All displays **must** have **Idaho Grown Russets, Red, and Gold Potatoes** in their displays to qualify and no other potatoes from other regions.
- All displays must remain up for a **minimum of one week**.
- Please send all contest entries to [contests@fsproduce.com](mailto:contests@fsproduce.com) by **Thursday, March 6, 2025**.



While use of social media is not required, it is a great way to promote Potatoes, as well as share recipes and ideas for your customers next meal!

### DISPLAY CONTEST CODES:

- 4449 – CV Potatoes Gold 10/5lb Green Giant Bags
- 4482 – CV Potatoes Red 10/5lb Green Giant Bags
- 4540 – CV Potatoes Russet ID 10/5lb Green Giant
- 4555 – CV Potatoes Russet 5/10lb Green Giant Bags
- 4643 – CV Potatoes Russet 10/5lb
- 4504 – CV Potatoes Russet ID 60ct
- 4512 – CV Potatoes Russet ID 70ct
- 4525 – CV Potatoes Russet ID 50lb 100ct

- 234797 - CV Potatoes Buttery Salt & Pep 12/1lb
- 234798 - CV Potatoes Buttery Chive&Dill 12/1lb
- 234800 - CV Potatoes Buttery Rst Garlic 12/1lb
- 234801 - CV Potatoes Brown Gravy 12/1lb
- 234802 - CV Potatoes Chicken Gravy 12/1lb

- 235030 – POS Display Shipper 1 ea GG Minute Mashers
- 235032 – POS Green Giant Cut-Out 1 ea Green Giant Man
- 235031 – POS Shelf Talkers 1 ea GG Minute Mashers

### DISPLAY CONTEST PRIZES:



**The top 4 displays will receive a \$250 gift card.**



**Everyone is a winner!**  
Each qualified entry will receive a SUPER COOL Idaho Potato Commission hat, just for entering.

For more information on Idaho Potatoes, please visit <https://idahopotato.com/>

For more display contest information or for potato display tips, please contact your Four Seasons Produce Sales Rep or Merchandiser.

Thank you for your continued trust and support of Four Seasons Produce.



PHONE: 1.800.422.8384

| [www.fsproduce.com](http://www.fsproduce.com)





chelan  
fresh

# SUGARBEE APPLE DISPLAY CONTEST

**FEBRUARY 3 - MARCH 2, 2025**



Want to sweeten your sales and add some “sting” into your apple category? Four Seasons Produce has partnered with Chelan Fresh to once again bring to you our annual SugarBee Apple Display Contest that is sure to create some serious “buzz” in your store. SugarBee Apples have rocketed to the top of consumers shopping lists in recent years, and now is the time to capture some added sales through some creative and fun merchandising. With awesome point of sale display bins and boxes as well as some attractive pricing, your eye catching SugarBee Apple display is sure to bring customers over to your apple hive!

## DISPLAY CONTEST CRITERIA:

- Build a BUZZworthy display of SugarBee Apples in your produce department or store. **All fruit MUST be purchased from Four Seasons Produce** in order to qualify for entry.
- You must purchase a **minimum of 8 cases of SugarBee Apples** during the course of the contest period in order to qualify. This can be a combination of CV and OG fruit.
- **Utilize the high graphic display boxes and bins** in your displays highlighting the SugarBee branding.
- All displays must remain up for a **minimum of one week**.
- Send all contest photos to [contests@fsproduce.com](mailto:contests@fsproduce.com) by **Thursday, March 6, 2025**.

## Conventional:

- Code 222529  
CV SugarBee 72/88ct
- Code 237758  
CV SugarBee 12/2lb Pouch Bag

## Organic:

- Code 222328  
OG SugarBee 80/88ct
- Code 226404  
OG SugarBee 12/2lb Pouch Bag

## POS:

- Code 223135  
SugarBee Pop Up Bin
- Code 238037  
OG SugarBee Pop Up Bin
- Code 222612  
OG SugarBee Display Box
- Code 242903  
OG Euro Carton
- Code 237756  
CV SugarBee Empty Box
- Code 242902  
CV SugarBee Euro Carton

## DISPLAY CONTEST CODES:



Code 223135



Code 222612



Code 242903



Code 237756



Code 242902



PHONE: 1.800.422.8384

www.fsproduce.com







# SUGARBEE APPLE DISPLAY CONTEST

**FEBRUARY 3 - MARCH 2, 2025**

## DISPLAY CONTEST PRIZES:

### THE QUEEN BEE - GRAND PRIZE:

An all-expense paid trip out to Washington State to witness the Fall apple/pear harvest in late September 2025. You will tour apple and pear orchards, visit Chelan Fresh packing sheds and facilities, and learn and see more on how product gets from tree to box to your display counters.

**2  
WINNERS**

**1 Large Store**  
(4 registers or more)  
**1 Small Store**  
(3 registers or less)



### GRAND PRIZE DISPLAY WILL BE JUDGED AS FOLLOWS:

Grand Prize winners will be chosen on creativity, overall eye appeal, use of SugarBee point of sale, and % of increase YOY. We will need scan data from stores in order to qualify.

### BONUS POINTS:

Bonus points will be given for sampling sessions and use of social media posts creating the "Bee" excitement!

### "BEE CREATIVE"

Most Creative Display:

**1ST: \$300**  
**2ND: \$200**  
**3RD: \$100**

**HONORABLE MENTION:**  
**\$50**

### "THE BEE COLONY"

Largest Display:

**1ST: \$300**  
**2ND: \$200**  
**3RD: \$100**

**HONORABLE MENTION:**  
**\$50**

### "BABY BEE"

Best Small Store Display:

**1ST: \$300**  
**2ND: \$200**  
**3RD: \$100**

**HONORABLE MENTION:**  
**\$50**



For more information of tips on building an amazing SugarBee apple display, please contact your Four Seasons Sales Rep or Merchandiser.

Thank you for your continued support of Four Seasons Produce.



PHONE: 1.800.422.8384 | [www.fsproduce.com](http://www.fsproduce.com)





# LINE EXTENSION AVAILABLE NOW



Our sweet, Genovese basil is a fragrant and bright addition to salads, pastas and pesto. Or enjoy it muddled with lime in your favorite cocktail. Keep basil cool but not in the refrigerator for longer-lasting leaves.

## LINE EXTENSION

CODE	DESCRIPTION	PK/SZ	UPC
217351	CV Herb Basil Hydroponic	12/1.25 oz Gotham Greens	8-53927-00300-1



## CURRENT OFFERINGS

CODE	DESCRIPTION	PK/SZ	UPC
217350	CV Lettuce Butterhead Baby	12/4.5 oz Gotham Greens	8-53927-00321-6
217360	CV Dressing/Dip Basil Lemon	6/10 oz Gotham Greens Vinaigre	8-53927-00343-8
239672	CV Dressing Green Goddess	6/10 oz Gotham Greens	8-53927-00341-4
236801	CV Dressing/Dip Vegan Caesar	6/10 oz Gotham Greens	8-53927-00360-5
217358	CV Dressing/Dip Vegan Goddess	6/10 oz Gotham Greens	8-53927-00342-1
238331	CV Dressing/Dip Vegan Ranch	6/10 oz Gotham Greens	8-53927-00348-3
237422	CV Sauce Pesto Classic	6/6.5 oz Gotham Greens	8-53927-00334-6
237423	CV Sauce Pesto Vegan	6/6.5 oz Gotham Greens	8-53927-00335-3



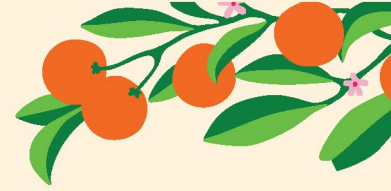
PHONE: 1.800.422.8384 | [www.fsproduce.com](http://www.fsproduce.com)





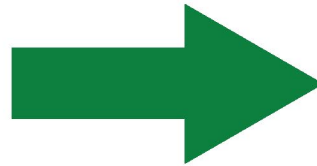
# Natalie's

ORCHID ISLAND JUICE CO.



## 16oz to 12oz TRANSITION

16oz



12oz



OLD CODE	NEW CODE	DESCRIPTION	NEW PK/SZ	OLD UPC	NEW UPC
6306	242777	CV Juice Orange	12/12 oz Natalie's Juice	7-25341-18114-9	7-25341-18120-0
6321	242781	CV Juice Orange Pineapple	6/12 oz Natalie's Juice	7-25341-44114-4	7-25341-44612-5
6304	242782	CV Juice Orange Mango	6/12 oz Natalie's Juice	7-25341-41114-7	7-25341-41612-8
6399	242783	CV Juice Orange Beet	6/12 oz Natalie's Juice	7-25341-43114-5	7-25341-43112-1
6653	242784	CV Juice Blood Orange	6/12 oz Natalie's Juice	7-25341-19114-8	7-25341-19112-4
6297	242785	CV Juice Honey Tangerine	6/12 oz Natalie's Juice	7-25341-99984-3	7-25341-99912-6
236045	242786	CV Juice Tanger Pineapple A&B	6/12 oz Natalie's Juice	7-25341-51519-7	7-25341-51512-8
6228	242787	CV Juice Grapefruit	6/12 oz Natalie's Juice	7-25341-28224-2	7-25341-28120-7
6329	242788	CV Juice Lemonade Strawberry	6/12 oz Natalie's Juice	7-25341-88884-0	7-25341-88820-8
6448	242794	CV Juice Lemonade	6/12 oz Natalie's Juice	7-25341-55554-4	7-25341-55512-4
230793	242789	CV Juice Lemonade Guava	6/12 oz Natalie's Juice	7-25341-71714-0	7-25341-71612-9
6460	242790	CV Juice Carrot Ginger	6/12 oz Natalie's Juice	7-25341-42134-4	7-25341-42112-2
228530	242791	CV Juice Pineapple Kale Zinc	6/12 oz Natalie's Juice	7-25341-01907-7	7-25341-06712-2
213880	242792	OG Juice Orange	6/12 oz Natalie's Juice	7-25341-19214-5	7-25341-19212-1

**DELIVERY STARTING THE WEEK OF 2/10**

**NEW SIZING WILL BE AVAILABLE AS THE OLD SIZING SELLS OUT**



PHONE: 1.800.422.8384

www.fsproduce.com



# Sumo Citrus<sup>®</sup> Tropical Smoothie

- ✓ Exclusive Sumo Citrus premium licensed product
- ✓ Sumo Citrus #1 ingredient
- ✓ Passionate consumer base routinely on seasonal treasure hunt
- ✓ Unique, incremental offering



CODE	DESCRIPTION	PK/SZ	UPC
243024	CV Juice Sumo Citrus	4/59 oz Bolthouse Cold Pressed	7-62357-00074-3
243025	CV Juice Sumo Citrus	6/15.2 oz Bolthouse	0-71464-02540-3